



CANCER  
RESEARCH  
UK



maleon

Innovative Consulting Engineers  
Maximising Property Performance

Cancer Research UK and the IQL  
Media Release



## We are proud to deliver workplace design to Cancer Research UK's new offices in The International Quarter London in Stratford

**Maleon are delighted to be supporting Cancer Research UK's office move into the IQL at Stratford where they will be based alongside the British Council, Transport for London and the FCA.**

Maleon have provided technical due diligence on the base build MEP design, and continue to provide a design oversight and monitoring role for the new offices - working with Martin Elmer, Director of Property at Cancer Research UK.

Georgie Belton, Sales and Marketing Director of Maleon said: *"We are very flattered that Cancer Research UK chose Maleon as their building services design partner for their new offices in the International Quarter London. Our consultants were part of a wider professional services team working with Kane Wagstaff at Jones Lang Laselle. The International Quarter London has quickly become valued for its innovative design as a workplace environment offering agile ways of working"*.



# About The International Quarter

The International Quarter is located in Stratford the former home of the London 2012 Olympics and boasts almost 4 million square feet of Grade A office accommodation along with 333 new residential units and community facilities within a 22-acre site.

Almost 1 million square feet of office space is pre let to clients including The FCA and Transport for London in the first two buildings. The site has a gross development value of £2.4 billion.

IQL's workplaces are designed to visually and spatially connect employees and encourage communication and collaboration. Almost 35km of new cycle ways and footpaths have been built into the park which is surrounded by over 560 acres of The Queen Elizabeth Park and provides direct access to the Olympic Sports Facilities

The site has exceptional transport and technology links. At peak times of the day 202 trains will pass through Stratford per hour. It is just six minutes by train to St Pancras and 14 minutes to London City Airport. The site also uses the digital infrastructure put in place to seamlessly broadcast the London 2012 Olympics.

The IQL aspires to be the most sustainable office development in London, designed, delivered and operated with sustainability at its core.



*"Stratford is one of the most astonishing transformations that London and probably Europe have ever seen"*

Deyan Sudjic  
Director  
Design Museum





## About Maleon

**Maleon are a UK based building services design consultancy with almost 20 years experience in the real estate industry.**

Maleon have worked provided consultancy to over **15% of the FTSE 100** since they started on a variety of projects benefitting from their mechanical and electrical expertise in workplace solutions, asset management, sustainability, facilities management, data centres, and infrastructure consultancy.

Maleon considers itself **large enough to count and small enough to care** which has given rise to the their popularity in delivering outstanding workplaces for outstanding people; including **10 Fortune 500 companies** in the UK.

Our workspaces are valued by employees, occupiers and building owners alike. This has given rise to their popularity with many real estate investment trusts including Britain's largest, Land Securities, who deploy Maleon across their London portfolio.



# Enhanced performance for landlords and employers

The 2016 PWC Emerging Trends Survey revealed that 92% of Corporate Real Estate Experts said promoting the workplace and wellness agenda was important to their occupiers strategy.

Whether you are a landlord looking to drive occupier rentals or and employer looing to drive workplace performances, Maleon's Workplace Solutions Consultancy is here to drive value.

Better business performance begins with better workplace performance. Maleon's Consultants will leverage your corporate real estate to drive productivity and excellence.



# Workplace Solutions Expertise

*"Outstanding workplaces for outstanding people."*

The interplay between attracting and retaining the best talent, deploying leading edge technology in the workplace environment whilst also meeting sustainability criteria and real estate goals has created one of the most dynamic markets in the property sector.

The evolution of the modern office is rapidly changing to meet the demands of the latest work environments. Agility in the workplace is key to the most successful modern day office environments, the pace at which leading design is used to deliver the best on-site environments whilst supporting personnel to work off-premise is everything.

Our engagements in workplace solutions have been for a variety of global companies where our designs have facilitated best practice in office design for their personnel and for landlords seeking to maximise the highest occupancies in the London commercial property market.

Our consultants have delivered office headquarters for FTSE 100 companies, conference suites, break-out areas, white noise solutions, space optimisation programmes, lighting programmes and sustainability packages.

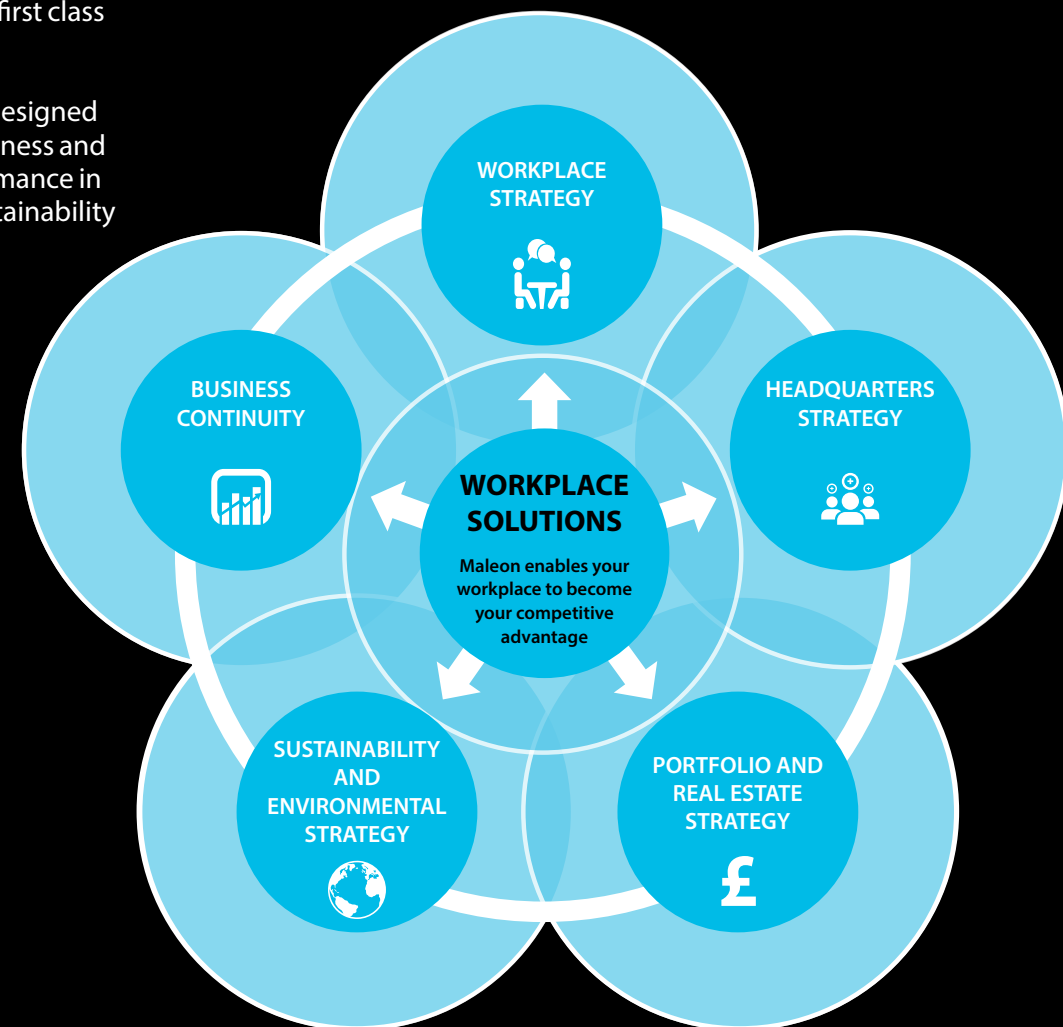
We are equally as valued for the aesthetics and technological advancements that our consultants are able to offer as the performance indicators we help our clients achieve around employee satisfaction and real estate portfolio maximisation.

Our solutions are most often found supporting the needs of the most demanding customers in the global banking, financial services and petrochemical sectors. We are second to none in delivering outstanding workplace environments so that you can expect first class performance from your personnel.

Maleon's Workplace Solutions are all designed to provide that blurring between business and leisure, and ultimately to drive performance in the workplace. Every solution has sustainability and leveraging technology at its core.

#### Examples include:

- White noise solutions
- Executive conference suites
- Bespoke heating
- Bespoke cooling
- Daylight solutions
- Break out areas
- Seating solutions
- Recreational areas
- Conference rooms
- Kitchen and dining zones
- Space optimisation.





## Key Workplace Solutions Consultants

*"Outstanding workplaces for outstanding people."*



Matthew has a wealth of experience in building services engineering and covers all aspects of project management, planning, design, supervision, commissioning and testing. His involvement in technical issues includes the design of highly resilient data centres and critical facilities and he enjoys translating engineering principles and techniques into practical solutions which provide both environmental and cost benefits for clients.

Matthew leads the electrical engineering team at Maleon with a particular focus on low-energy and sustainable solutions. He provides overall project consultancy for large-scale commercial developments in Europe, Asia and Africa.

Recently Matthew completed the design and commissioning of two key data centres for BP's headquarters in the Baku which provides critical communications infrastructure for BP's operations in the Caspian Sea region.

---

**Name:**  
[Matthew Lubbock](#)

---

**Job Title:**  
Director

---

**Email:**  
[matthewlubbock@maleon.com](mailto:matthewlubbock@maleon.com)

---

**Mobile:**  
+44 (0)7813 892791



James has 26 years' experience in the building services industry and his project and design management expertise for commercial offices, data centres and large developments has resulted in the successful delivery of many UK and international projects.

Starting with his design apprenticeship for a mechanical building services contractor and continuing through his academic training, James has developed a focus on low-energy HVAC solutions that are designed to be practical, achievable and above all buildable on site.

James leads the mechanical engineering services design team at Maleon and is responsible for business management systems and quality control of all documents and drawings. He also oversees the production team to ensure that project information is always issued on time, in the correct format, to the right members of the project team.

---

**Name:**  
[James Cottee](#)

---

**Job Title:**  
Director

---

**Email:**  
[jamescottee@maleon.com](mailto:jamescottee@maleon.com)

---

**Mobile:**  
+44 (0)7813 718973



Paul has been with Maleon for nine years and has an HND in Electrical Building Services from the Royal School of Military Engineering and a Masters in Sustainable Electrical Building Services Engineering from Manchester University. He has extensive workspace consulting experience across a wide range of FTSE 100 companies from real estate investment trusts to petroleum companies.

In Paul's work with BP he has provided consulting for their outstanding employee areas and created resilient IT solutions for their ten story offices in Baku.

In London, Paul has covered prestigious projects at 5 New Street Square for Land Securities and much the accoladed 2 Kingdom Street for British Land. In both cases, projects covered workplace elements including leading-edge lighting, heating, seating, break out areas, use of devices, sustainability, cooling and specialisms around maximising daylight.

---

**Name:**  
[Paul Davis-Moull](#)

---

**Job Title:**  
Associate

---

**Email:**  
[pauldavis-moull@maleon.com](mailto:pauldavis-moull@maleon.com)

---

**Mobile:**  
+44 (0)7967 008 096

# Contact



Telephone: +44 (0)1279 603700

Email: [mail@maleon.com](mailto:mail@maleon.com)

Visit: [maleon.com](http://maleon.com)

Riverside House  
The Maltings  
Sawbridgeworth  
Hertfordshire  
CM21 9JX